

# KF applies LogiX

-Continuous evaluation results in effective transports



KF Distribution & Logistics have since 1998 been using the advanced routing and scheduling system LogiX for continuous evaluation and readjustment of their distribution. Today, the organization has nine installations at different terminals all over Sweden.

The purpose of KF Distribution & Logistics is to handle the distribution of goods within Kooperativa Föreningen(KF) and to develop cost effective logistic solutions. To be able to work more efficiently, KF decided to purchase a suitable routing and scheduling system for their transportations. This became an extensive purchase where potential users and consultants determined the demands. After determining the demands, an evaluation of accessible product was made. After the first round of evaluation, three different products remained. These products were compared to each other by benchmarking. Evaluated criteria are presented in the table below.

Evaluated criteria at KF	
Algorithm	Hardware demand
Map	Operation or simulation
Restriction handling	Integration
Applicability	Supplier
Language & translation	Stability of system
GPS	Price & conditions

"To us, it was very important that the system was able to describe different types of goods flow from various types of terminals in an easy way. With the LogiX tramping algorithm, the flow of goods were described very exactly. It also felt secure to be able to buy a standard system that fulfills the planning needs we have."

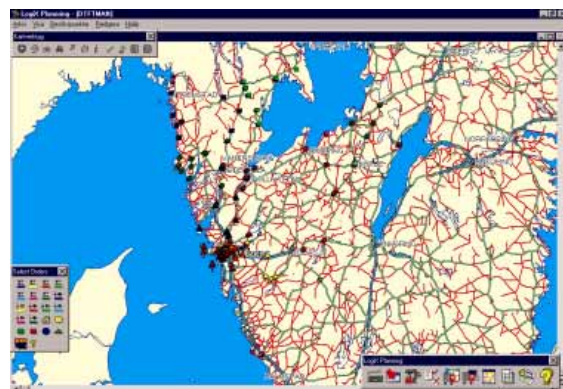
P-O Larsson  
KF Distribution & Logistics

Delivery	IP	Type	Start	End	Start	End	Min	Max	Time	Period
1	0	Depot	07000	07000	0	0	0000	0000	0	
2	0	Depot	07000	07000	0	0	0000	0120	01	
3	0	Depot	07000	07000	0	0	0000	0250	14	0200 0300
4	2	D	07000	07000	07000	07000	0000	0420	0	0200 0300
5	7	D	07000	07000	07000	07000	0000	0500	10	0200 0300
6	4	D	07000	07000	07000	07000	0000	0527	10	0200 0300
7	0	D	07000	07000	07000	07000	0000	0600	16	0200 0300
8	0	Depot	07000	07000	07000	07000	0000	0640	00	
9	0	Depot	07000	07000	07000	07000	0000	0652	10	0200 0300
10	10	D	07000	07000	07000	07000	0000	0750	20	0200 0300
11	0	D	07000	07000	07000	07000	0000	0800	10	0200 0300
12	10	D	07000	07000	07000	07000	0000	0912	30	0200 0300
13	0	Depot	07000	07000	07000	07000	0000	1250	1910	00
14	0	Depot	07000	07000	07000	07000	0000	1430	74	
15	30	D	07000	07000	07000	07000	0000	1520	00	0700 1700
16	32	D	07000	07000	07000	07000	0000	1613	00	0700 1700
17	0	Depot	07000	07000	07000	07000	0000	1652	30	

Special report developed to fit the needs in a detailed study of distribution routes.

Today, the system has been used in various ways. It has proved to be able to provide a lot within different areas, for example:

- Simulation of increasing transport costs origin from closing of terminals.
- Simulation of new positions of terminals and the effects on transport costs.
- Reliable data for consideration of routing plans from terminals to shops.
- Production of delivery plans for different flows.
- Simulation of effects of varieties in volume, frequency and delivery time to shops.
- Control of transport invoices and transport journals.



One day's distribution from Gothenburg graphically displayed in LogiX.

For further information, contact DPS:  
Tel: +46-31-28 56 80

email: [dpss@dpss.se](mailto:dpss@dpss.se)  
Internet: [www.dps-int.com](http://www.dps-int.com)