

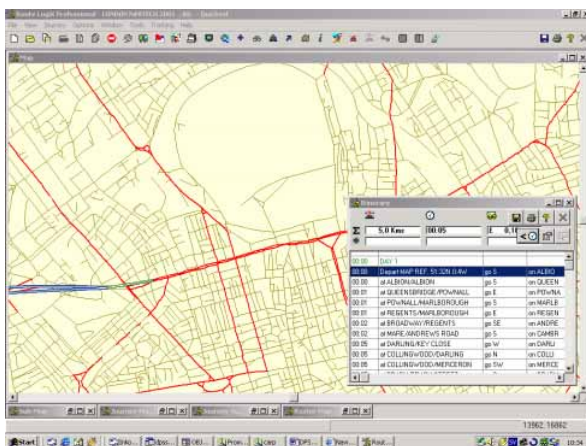
DPS & Navigation Technologies



NAVSTREETS™ - Detailed street maps for Routing & Scheduling

NAVSTREETS™ Data – Delivering Efficiency and Profitability

In the competitive transportation industry, you need every edge you can get. NAVSTREETS data drives competitive advantage for fleet operators by providing complete, up-to-date and functional street network data for North America, Europe and Middle-East.

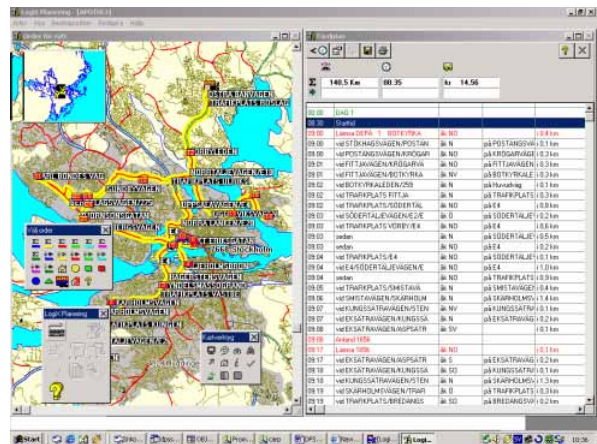


All DPS products are compatible with Navstreets™ offering our clients the most accurate street data available.

Accurate Geocoding - High quality, block-by-block address ranges for both sides of the street, supporting highly accurate geocoding. This helps improve operational efficiency and saves on cost and labor by reducing manual geocoding.

Improved Drive Time Analysis - The exceptional accuracy and leading-edge attributes found in NAVSTREETS data facilitate more accurate drive time analysis and Automatic Vehicle Location (AVL) functionality. Navigable attributes such as speed categories, Z-levels, physical, logical and legal turn restrictions and one-way streets give dispatchers a real-world

representation of the street network. This provides for shorter, more precise delivery time windows.



DPS Routing & Scheduling systems handles physical restrictions such as coastlines.

Route Optimization - Data attributes such as five functional road classifications, exit and entrance ramps, speed classifications and bridge and tunnel location assist dispatchers in optimizing and scheduling the most productive routes. Better routes reduce the distance driven and, in turn, reduce fleet operating costs.



DPS and Navstreets offer the best Scheduling solution available today.

For further information, contact DPS:

Tel: +46-31-28 56 80

email: dpss@dpss.se

Internet: www.dps-int.com